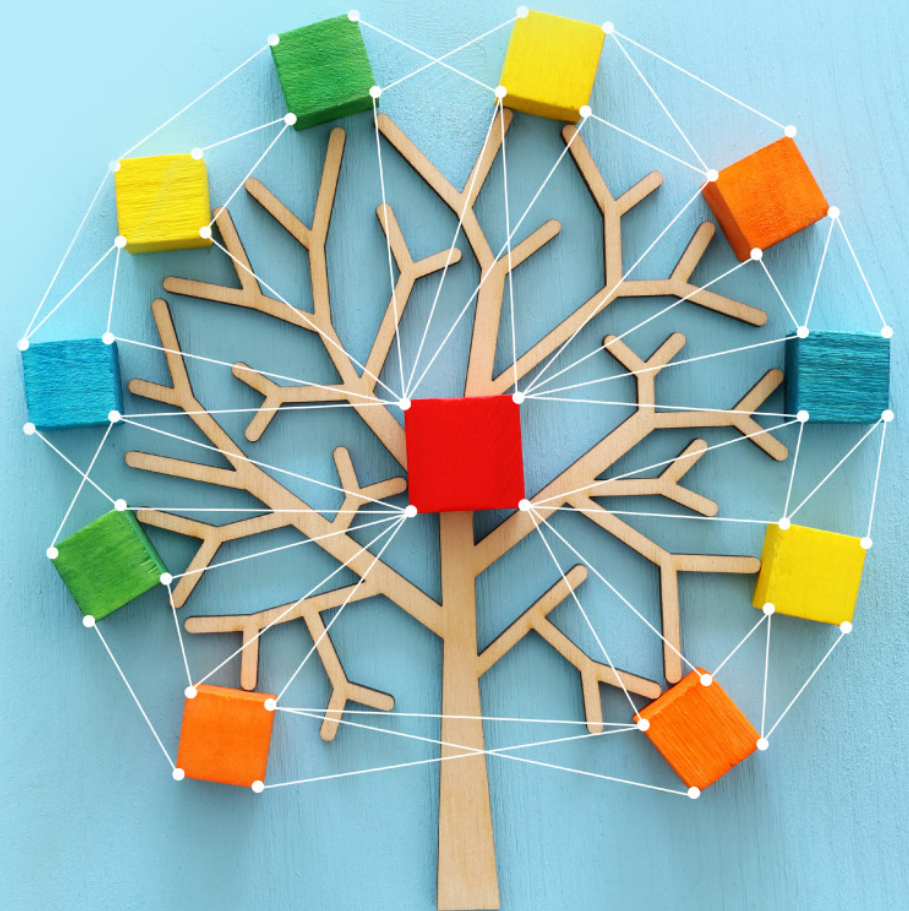


Mission Statement Decision Tree

A Simple Tool to Help You Make
Mission-Driven Decisions Every Time

by Janice Ziemba



A Simple Tool to Revolutionize Decision-Making

Whether you're considering a new activity, program, or financial investment, your Christian community needs a way to discern how (or if!) the proposed project is in alignment with your mission and values.

In other words, it gives you a chance to ask yourselves: **Will this investment of our resources (including time, talent, and treasure) actually move us closer to the work God has called us to, or is it a distraction?** It might be a worthwhile cause, but if it isn't aligned with your core mission, it's a distraction nonetheless. Good decision-making and leadership is about knowing when to say "no" as much as when to say "yes!"

How to Use the Decision Tree

This tool can be used by your church council or governing body, a non-profit leadership team, or even in your personal life and ministry, as you discern steps forward. Here's what you'll examine as you work your way down the tree:

1. How the project aligns with your mission.
2. The level of urgency the project presents.
3. If you have the resources to complete the project.
4. What it will take to obtain the resources if necessary.

Don't keep your deliberations to yourself! Use the tool to communicate your community and stakeholders how you came to your decision about anything, from replacing an HVAC unit to the focus of a stewardship campaign!

May God bless you as you use the decision tree to guide your activities and prioritization for the direction of your ministry, now and in the future!

In Christ,

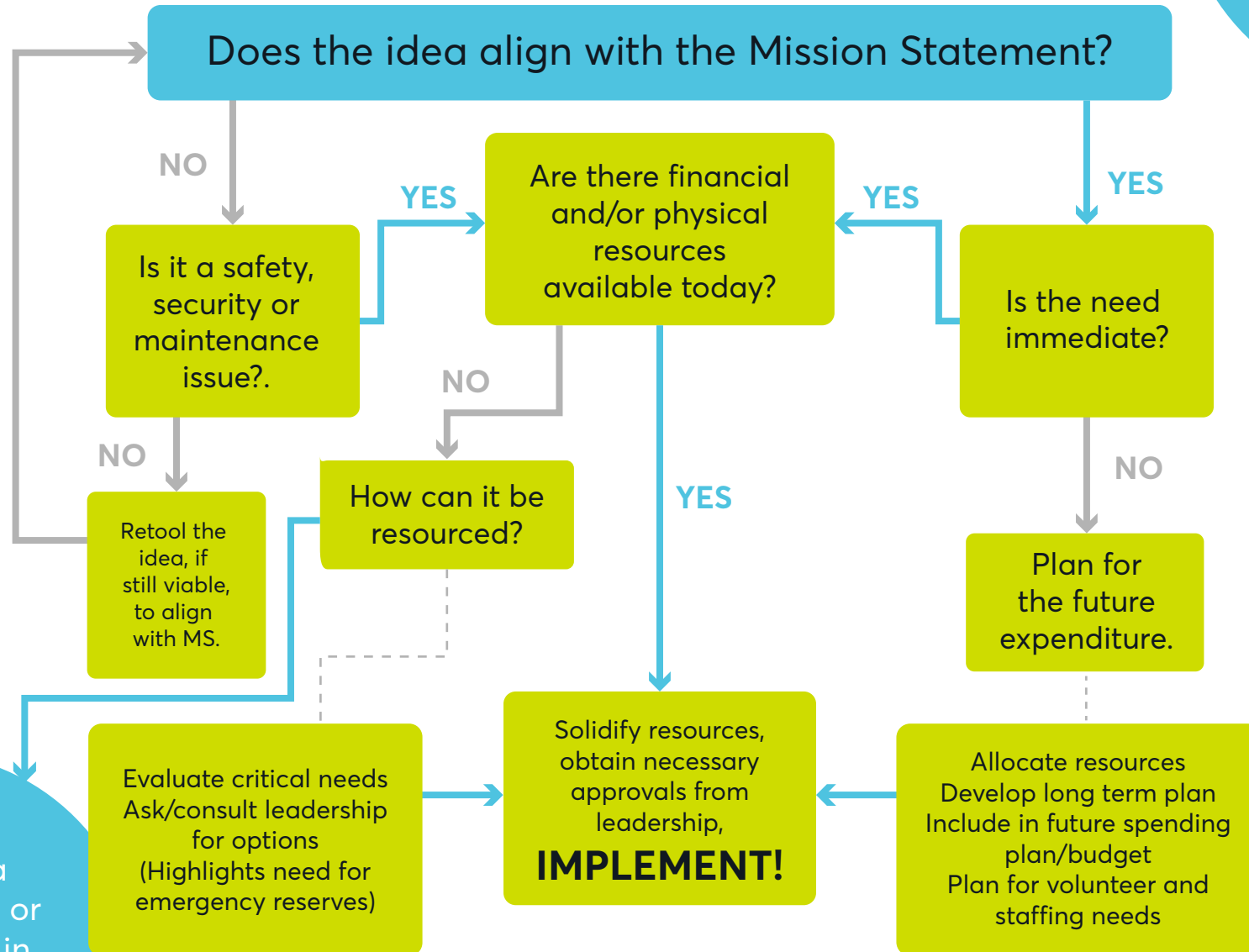
Janice Ziemba

OpenPathsFinancialCoaching@gmail.com



Mission Statement Decision Tree

Stop ... pause ...
reflect ... analyze
... Brainstorm
outcomes and
viability with MS



Perhaps a hybrid plan, or implement in stages, based on most critical need.

